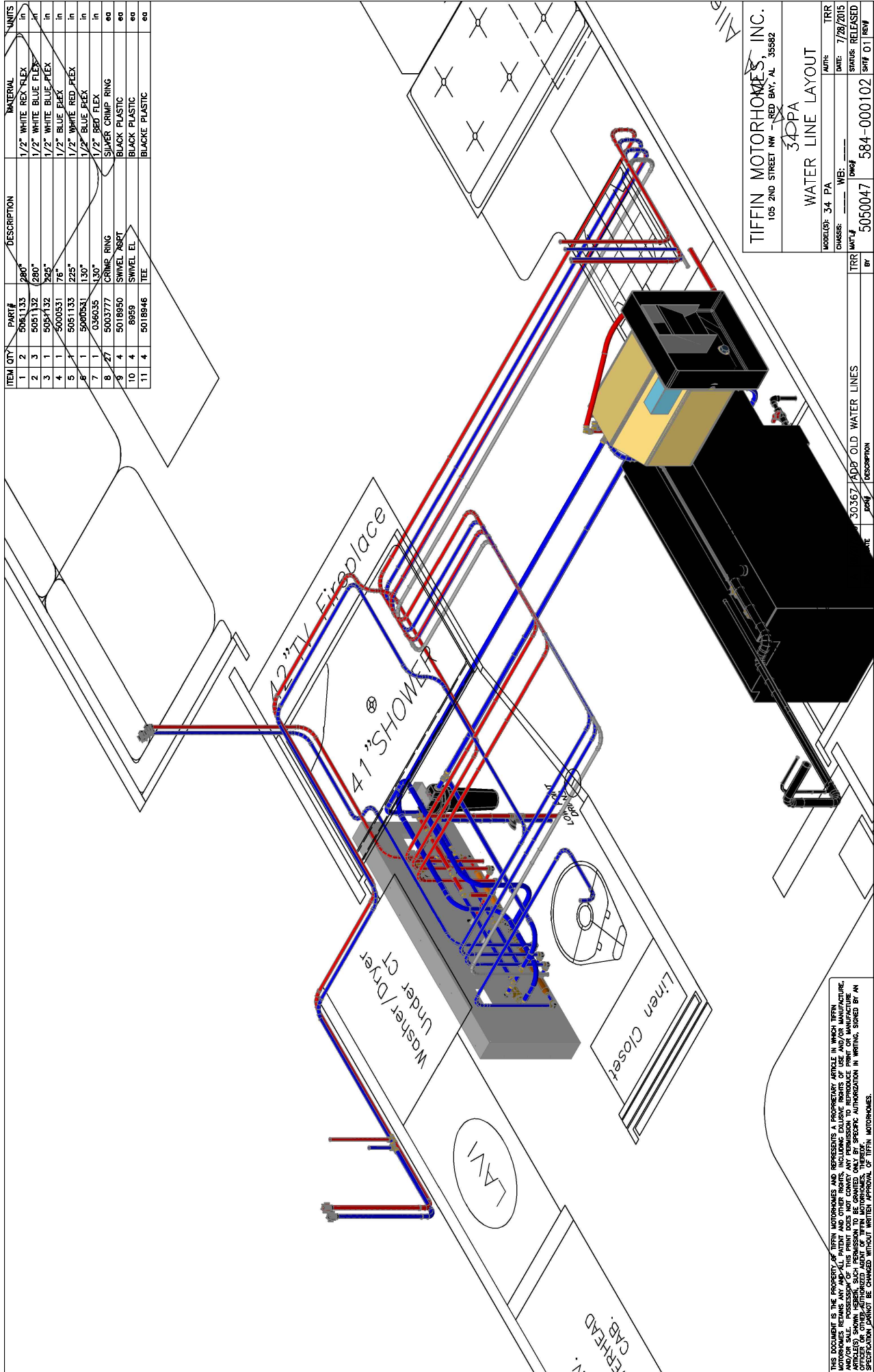


ITEM QTY	PART #	DESCRIPTION	MATERIAL	UNITS
1	2	280"	1/2" WHITE REX FLEX	in
2	5051132	280"	1/2" WHITE BLUE FLEX	in
3	5051132	285"	1/2" WHITE BLUE FLEX	in
4	5000531	76"	1/2" BLUE FLEX	in
5	5051133	225"	1/2" WHITE RED FLEX	in
6	5000531	130"	1/2" BLUE FLEX	in
7	1	036035	1/2" REX FLEX	in
8	5003777	CRIME RING	SILVER CRIMP RING	60
9	5018950	SWIVEL NUT	BLACK PLASTIC	60
10	4	8959	SWIVEL EL	60
11	4	5018946	TEE	60



TIFFIN MOTORHOMES, INC.
 105 2ND STREET NW - RED BAY, AL 35582

34DPA
 WATER LINE LAYOUT

MODEL: 34 PA AMTR: TRR
 CHASSIS: WB: DATE: 7/28/2015
 TRR DATE: 7/28/2015
 30367 30367 OLD WATER LINES TRR DATE: 7/28/2015
 5050047 584-000102 SFW 01 TRR

THIS DRAWING IS THE PROPERTY OF TIPPIN MOTORHOMES AND REPRESENTS A PROPRIETARY ARTICLE IN WHICH TIPPIN MOTORHOMES RETAINS ALL PATENT AND OTHER RIGHTS, INCLUDING EXCLUSIVE RIGHTS OF USE AND/OR MANUFACTURE, AND/OR SALE. POSSESSION OF THIS PRINT DOES NOT CONVEY ANY PERMISSION TO REPRODUCE PRINT OR MANUFACTURE, COPY, TRANSMIT, OR OTHERWISE DISSEMINATE THIS INFORMATION WITHOUT THE SPECIFIC AUTHORIZATION IN WRITING, SIGNED BY AN OFFICER OR OTHER AUTHORIZED AGENT OF TIPPIN MOTORHOMES. TIPPIN MOTORHOMES ACCEPTS NO LIABILITY FOR ANY SPECIFICATION WHICH DOES NOT MEET THE SPECIFICATIONS OF THE TIPPIN MOTORHOMES. SPECIFICATIONS SHOULD BE CHANGED WITHOUT WRITTEN APPROVAL OF TIPPIN MOTORHOMES.